

CONCRETE BREAKWATER

TYPE SFBW1000/3,0



The geometry of this pontoons, in combination with our patented coupling and an advanced mooring system, makes our floating breakwater an excellent wave attenuator.

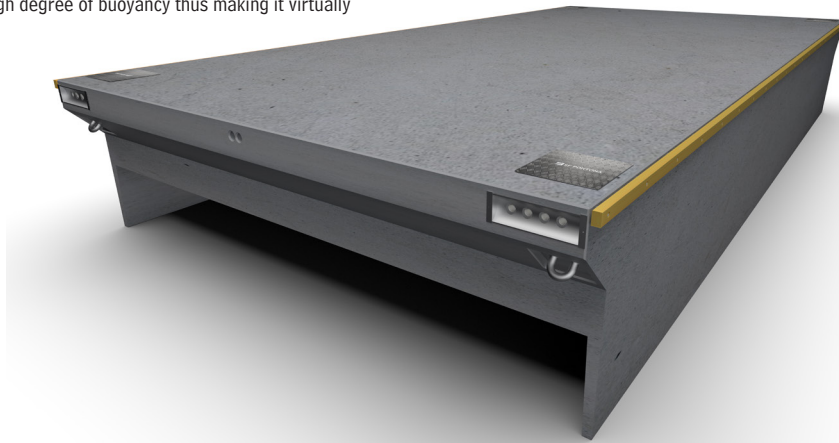
This pontoon has been developed gradually over the years. From smaller sizes in the beginning, now reaching the width of 8 meters, it is the largest model of floating breakwater on the market.

The breakwaters from SF MARINA are all-concrete pontoons with all the advantages of high stability and buoyancy. The all concrete and styrofoam construction of the pontoon produces a very high degree of buoyancy thus making it virtually unsinkable.

As a result of the use of high quality materials, coupled with a thorough manufacturing process, the pontoon enjoys a long life-span. Each standard pontoon is designed to accept electrical and water supply services.

Normally, the pontoons would be moored using chains and blocks.

This pontoons are first and foremost as a floating breakwater. However, they can be used universally where the potential of a pontoon having high stability and freeboard can be utilized



SPECIFICATIONS

The pontoon is manufactured in accordance with the Eurocode SS-EN1992-1-1

Length: 20.00 m.
Width: Incl. fender 10.25 m.
Width: Excl. fender 10.00 m.
Height: 3.0 m.
Weight: Approx. 200 ton.
Freeboard: Approx. 0.8m
Connectors: 2 units type W 5000 per joint.
Breaking load: W 5000: 2 x 260 ton per joint.

All-concrete pontoons:
Concrete: C40/50. Air 6%. Wct < 0.4.
Reinforcement: Nps 500, K500 C-T.
Styrofoam: min. 80kPa.
Cast-in materials: Stainless or hot-dipped galvanised steel.
Wood fender: Pressure-treated pine 95 x 145 mm.
Other dimensions can be offered upon request.
Rights reserved for alterations